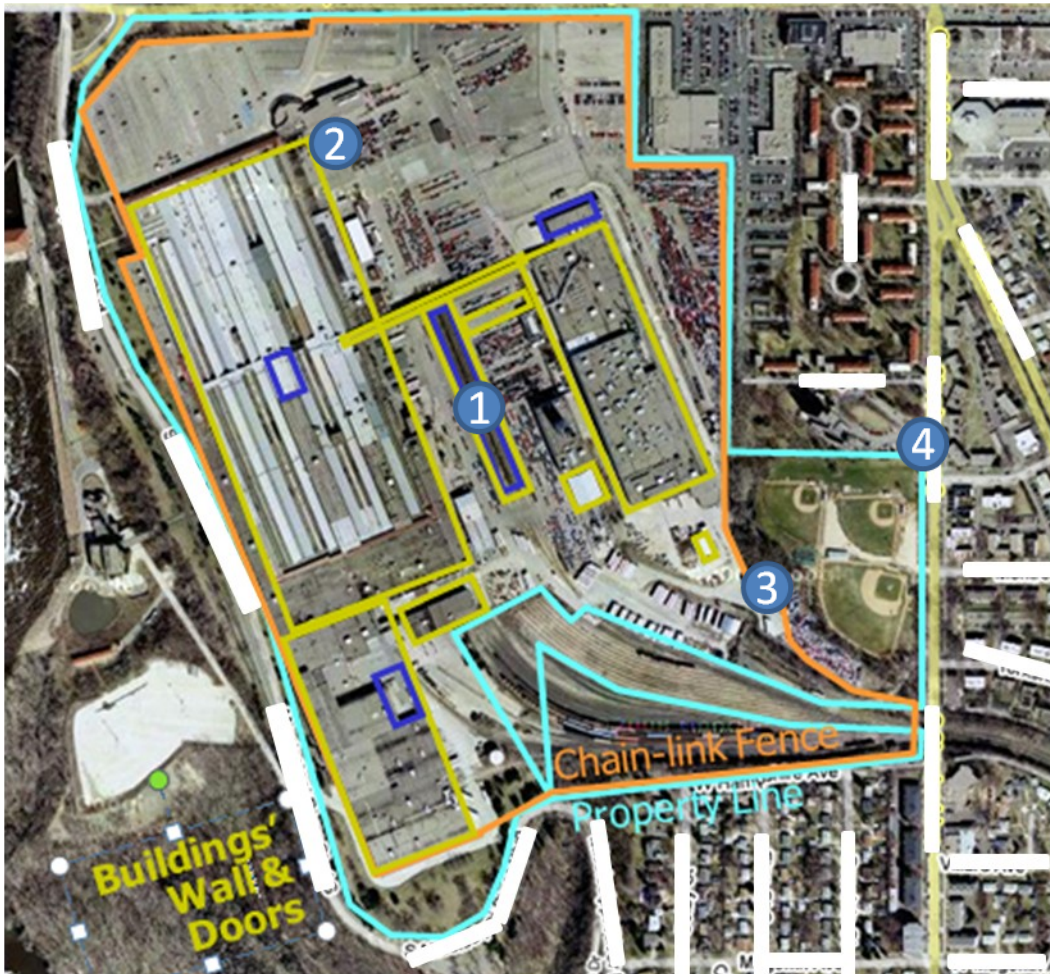


**REAL-TIME IDENTIFICATION OF EMP INCIDENTS
ALLOW APPROPRIATE RECOVERY OPERATIONS
INTEGRATE INTO SECURITY SYSTEMS, TRAINING, & PROCEDURES**

*Electromagnetic Field Detection from 100MHz to 10GHz
E field levels from .01 to over 10,000 volts per meter*

Emprimus Threat Detection Philosophy:

Detect a wide range of radio frequency threat intensities, ranging from nuisance levels to those that damage electronics and cause data integrity issues. Emprimus' proprietary approach employs high speed signal processing of the extremely wide bandwidth waveforms to obviate the need for expensive sampling systems. Tailored central control provides alerts, threat identification, direction, magnitude, signature analysis, and data logging at a very low bandwidth. System output can be integrated into systems dashboards to enable appropriate security & disaster team response.



Features

- Continuously monitor shielding effectiveness
- Penetration alerts
- Data center equipment malfunction
- Cell phone usage alert
- Sensitive facility monitoring

Place detectors

- ① Near critical assets
- ② Building perimeters
- ③ Fence line
- ④ Property line

Low cost architecture is the key

Emprimus Delivers:

- Detection Systems
- Testing Services
- Remediated Procedures
- Remediated Containment
- Modularized Spaces
- Co-location Facilities
- Education & Training

Emprimus
1660 S. Highway 100
Suite 130
Minneapolis, MN 55416
952-545-2051
www.emprimus.com