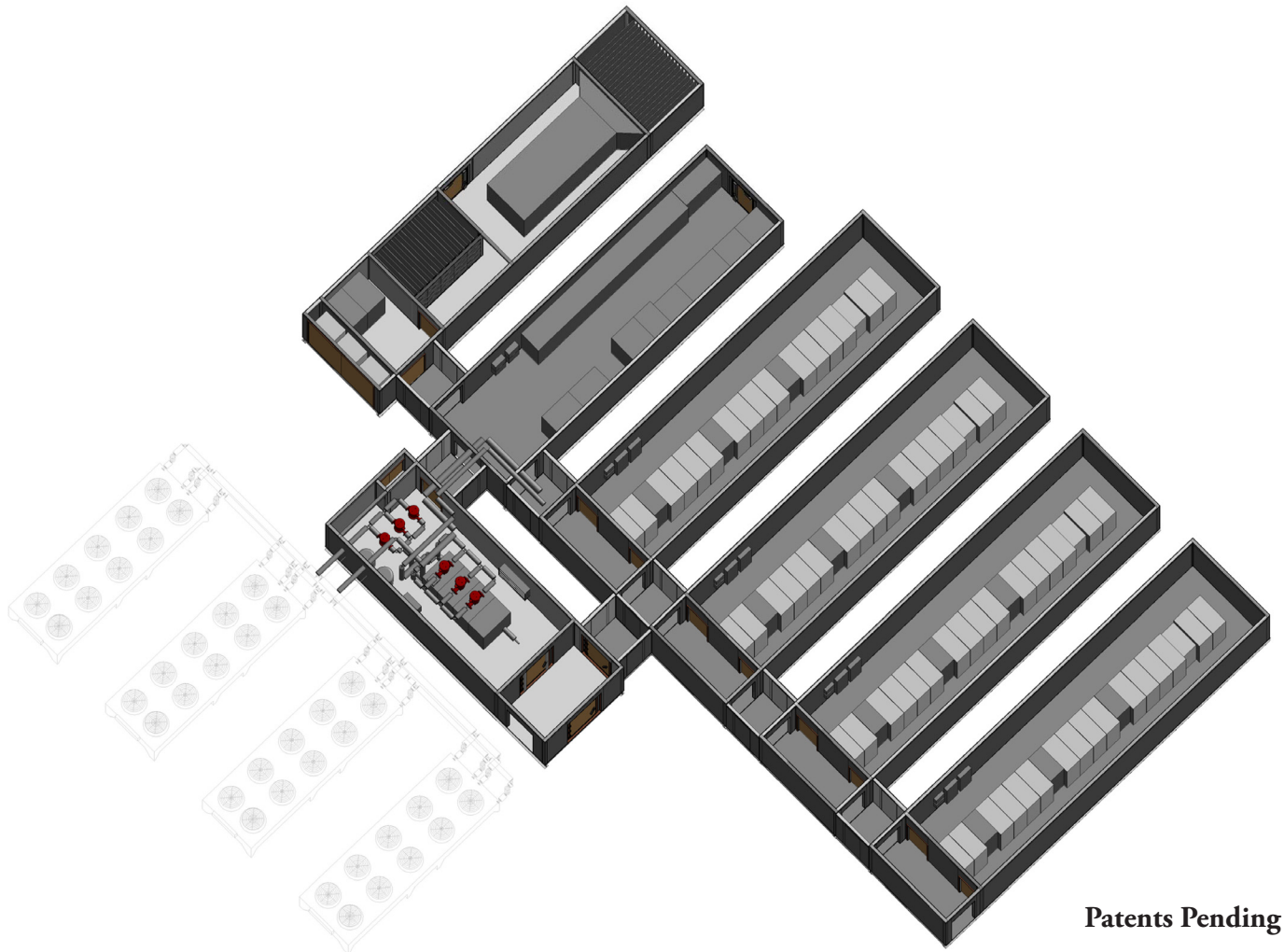


# EMP/EMI PROTECTED DATA CENTER MODULES

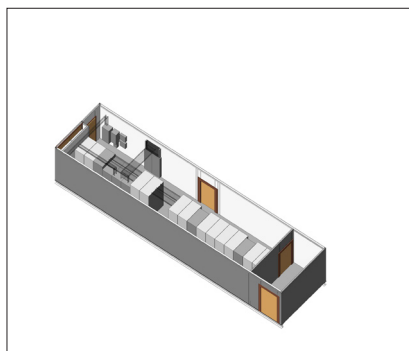
Protect from a wide range of radio frequency threat intensities, ranging from nuisance levels to those that damage electronics and cause data integrity issues with the Emprimus line of protected data, power, chiller, and generator modules.

emPRIMUS™

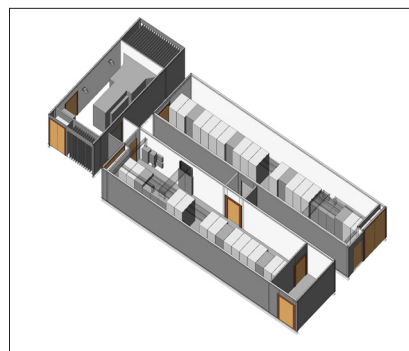


800 Series

100 Series



100 Series  
With  
Protected Generator



# EMP/IEMI PROTECTED DATA CENTER MODULES

## Overview Information

*Operate through or Recover From an EMP or IEMI Event*  
*Standard Power Modules Available: 100kW and 800kW*

Created to fulfill a need in both private facilities and service providers, the Emprimus line of protected data, power, chiller, and generator modules are adaptable to any end-user requirement for securing critical data assets. Designed and built as free-standing units with a protected and secure entryway, these modules are continuously welded and have filtered power and communications for data and can be expanded with connectors to include a protected chiller and generator to operate through an EMP or IEMI event as well as critical situations.

## Features and Sequence of Operation

- Scalable – 100 kW or 800 kW increments
- Delivered as Complete Modules
- Factory-Constructed, Site Assembled
- Secure Vestibule Access
- All Inclusive: Power, Chiller, Back-up Generator, Communications, Lighting, Fire Suppression, Security System
- Interior and Exterior Applications

EMP/IEMI Protection	Specifications 100	Specifications 800
Shielding Effectiveness	> 80 db	> 80 db
Frequency	14kHz – 8GHz	14kHz – 8GHz
Filter Capacity	100 kW	800 kW
Physical Dimensions	12'W x 49'Lx11.5'H	Varies
Rack Capacity	7 – 9	14 – 18
Protected Chillers	Optional	Included
Protected Generator	Optional	Included

EMP – Electromagnetic Pulse IEMI – Intentional Electromagnetic Interference



1660 S Hwy 100, Suite 130 • Minneapolis, MN 55413  
 T: 952.545.2051 • F: 952.545.2216

[www.emprimus.com](http://www.emprimus.com)

©2010 Emprimus, LLC • Patents Pending